

■ **Walt Disney's Comics and Stories – Vol. 15 No. 12**
(September 1953)

Evaluation Date: April 2, 2026



SUMMARY OF OBSERVATIONS

This comic retains the front cover, back cover, centerfold, all photographed interior pages, and both original staples. The book presents as visually strong overall, with clean artwork, solid color retention, and intact binding. The spine is straight and continuous, and all pages remain securely attached.

Condition observations are limited to **localized discoloration on the covers** and **visible oxidation on the staple metal**. No spine cracking, spine splitting, or paper loss is visible in the provided images. Interior pages show uniform age toning consistent across photographed pages, with no isolated staining, tearing, or moisture-related distortion. The paper retains flexibility as demonstrated by the brittleness test.

FRONT COVER — OBSERVATIONS

Walt Disney's Comics and Stories – Vol. 15 No. 12 (September 1953)

Photo Condition & Quality:

Clear, well-lit image showing the full front cover. The cover illustration shows Donald Duck seated wearing a large sombrero against a light background with strong yellow and orange color fields and a black rectangular text box at right.

Observations:

The front cover shows strong overall color retention, with clear ink boundaries and legible text. A **localized area of discoloration** is visible near the upper background field. This area appears slightly darker than the surrounding paper, with **diffuse boundaries** and no defined edge line. The affected area spans approximately **25–40 mm** in its longest dimension.

No paper deformation, cockling, or surface break is visible in this area. The discoloration does **not** extend from an edge and does **not** intrude into the printed artwork.

Edges show light handling wear without chips or paper loss. Corner rounding is present, affecting approximately **3–5 mm** inward at each corner.

Overall Impression:

The front cover remains intact and visually appealing, with **localized surface discoloration** and **light handling wear only**.

BACK COVER — OBSERVATIONS

Walt Disney's Comics and Stories – Vol. 15 No. 12 (September 1953)

Photo Condition & Quality:

Clear image showing the full back cover advertisement, including text blocks and illustrated automobiles on a light background.

Post
GRAPE-NUTS
FLAKES

THERE'S ONE IN EVERY SPECIAL PACKAGE
OF POST GRAPE-NUTS FLAKES

EACH IN 5 DIFFERENT COLORS!
5 MODELS!
25 DIFFERENT CARS IN ALL!

TRADE WITH YOUR FRIENDS!
GET 'EM ALL!

FORD THUNDERBIRD

Start your collection now!
1955 FORD
SCALE MODELS

FREE
to get you to try the new,
crispier, sweeter Grape-Nuts Flakes

Post
GRAPE-NUTS
FLAKES

SCALE MODEL FREE!
FORD

A Product of General Foods

Here they are, kids—**BRAND-NEW** realistic miniatures of the 1955 Fords shown here! They're made of sturdy plastic, with the styling and colors of the big cars, and *wheels that actually turn!* You'll want 'em all—so get your Grape-Nuts Flakes and **GET ROLLING WITH YOUR COLLECTION NOW!**

They're at your grocer's now!

Look for the special Grape-Nuts Flakes package marked **"SCALE MODEL CAR FREE IN THIS PACKAGE"** Hurry! Supplies Limited!

FORD COUNTRY SEDAN

FORD CUSTOMLINE TUDOR

FORD FAIRLANE SUNLINER

FORD FAIRLANE CROWN VICTORIA

"To get what it takes - eat Grape-Nuts Flakes"

Observations:

In the **upper-left quadrant**, a **distinct darkened area** is visible. This area is irregular in shape, darker than the surrounding background, and has **soft, diffuse boundaries**. The area spans approximately **35–55 mm horizontally** and **30–45 mm vertically**.

There is **no visible paper distortion**, rippling, or cockling in this area. Ink remains legible and intact. No tide line or edge-originating pattern is present.

Outside this area, the back cover shows uniform age toning and light edge wear affecting approximately **5–10 mm intermittently**. Corners are rounded **~3–5 mm**.

Overall Impression:

The back cover is intact with **localized dark discoloration** consistent with surface staining or handling discoloration, without structural impact.

INTERIOR PAGES — OBSERVATIONS

Walt Disney's Comics and Stories – Vol. 15 No. 12 (September 1953)

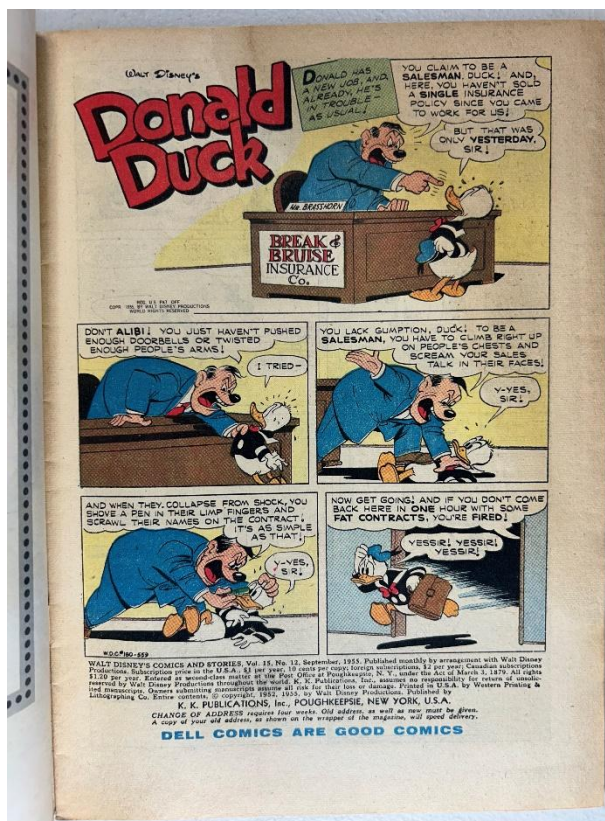




Photo Condition & Quality:

Multiple interior pages are shown flat. Pages depict multi-panel comic layouts featuring Donald Duck, Mickey Mouse, Pluto, and supporting characters in indoor and outdoor scenes with speech balloons.

Observations:

Interior pages exhibit **uniform tan to light-tan paper coloration**, darker toward outer margins and lighter near gutters. This toning pattern is consistent across all photographed pages and does **not** appear as isolated dark spots, halos, or edge-originating stains.

Colors remain clear and well separated. Linework is crisp. Minor bottom-margin waviness is visible on some pages, affecting segments of approximately **10–20 mm**, without creasing or fiber breakage. Small lower-corner bends extend **~3–5 mm** inward.

No interior tears, stains, writing, ink transfer, or moisture distortion are visible.

Overall Impression:

Interior pages are **clean, readable, and visually strong**, with **uniform age toning only**.

CENTERFOLD — OBSERVATIONS

Walt Disney's Comics and Stories – Vol. 15 No. 12 (September 1953)

Photo Condition & Quality:

Clear image of the two facing centerfold pages with the central gutter visible.



Observations:

Both original staples are present through the centerfold. The fold shows light compression extending ~**1–2 mm** on either side. Staple perforations remain close to original size, with no tearing, enlargement beyond ~**1 mm**, or paper loss visible.

No rust migration or discoloration extends into the centerfold paper.

Overall Impression:

The centerfold is **securely attached and structurally sound**.

SPINE — OBSERVATIONS

Walt Disney's Comics and Stories – Vol. 15 No. 12 (September 1953)

Photo Condition & Quality:

Side-profile image showing the full spine length resting on a rack.

**Observations:**

The spine appears **straight, continuous, and evenly aligned**. No vertical cracking, splitting, or paper loss is visible. No exposed interior page layers are present. Spine color appears consistent along its length.

Overall Impression:

The spine is in **excellent structural condition**.

UPPER STAPLE — OBSERVATIONS

Walt Disney's Comics and Stories – Vol. 15 No. 12 (September 1953)

Photo Condition & Quality:

Macro image clearly showing the upper staple and surrounding paper.



Observations:

The staple metal shows **visible surface oxidation**, appearing darker and duller than unoxidized metal. Surrounding paper appears intact, with no tearing, cracking, or slot enlargement beyond the original penetration.

No rust staining is visible in the adjacent paper.

Overall Impression:

Upper staple remains functional with **surface-level oxidation only**.

LOWER STAPLE — OBSERVATIONS

Walt Disney's Comics and Stories – Vol. 15 No. 12 (September 1953)

Photo Condition & Quality:

Macro image clearly showing the lower staple and surrounding paper.



Observations:

The lower staple exhibits oxidation similar in degree to the upper staple. Surrounding paper remains intact, with no visible tearing or enlargement of the staple slot.

Overall Impression:

Lower staple remains functional with **surface-level oxidation only**.

BRITTLENESS TEST — OBSERVATIONS

Walt Disney's Comics and Stories – Vol. 15 No. 12 (September 1953)

Photo Condition & Quality:

Clear image showing a page corner flexed outward.



Observations:

The page corner flexes smoothly over an arc of approximately **25–35 mm**. No audible cracking, fiber fracture, or flaking is visible. The page partially rebounds after release.

Overall Impression:

The paper is **not brittle** and retains good flexibility.